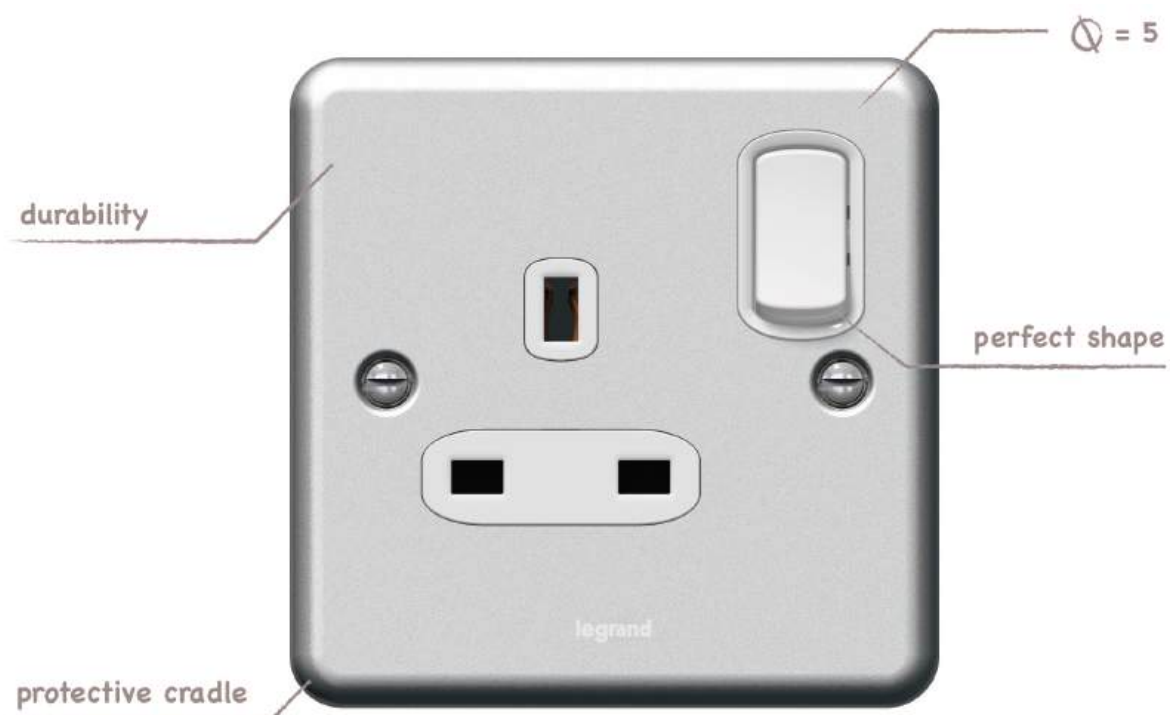


Synergy™ Metalclad

Full Metal. Sturdy. Reliable.



CATALOGUE
PAGES
→ INSIDE

Quality you can rely on

Compact. Simple. Safe.

Grey Epoxy Coated Steel finishing:
Weather-proof, rust and corrosion resistant.

With or without
knockouts

Double pole switching
function



Robust and effortless elegance:
Smooth and chamfered edge that is
aesthetically pleasant yet practical

Patented 3 pin safety shutter mechanism:
Ideal for public or zero supervision use,
electricity is cut off once any pins are
removed of the Standard British 13A plug.





7 338 00



7 338 03



7 338 56

Front plates: grey epoxy coated steel
Terminal screws captive and backed off ready for cabling - large angled terminal entries
Supplied complete with close fit 43 mm deep surface-mounting back box

Pack Cat.Nos Single pole plate switches 10 AX - 250 V~

Conform to BS EN 60669-1: 2000
Flush-mounting back box: min. 16 mm deep
Nominal plate dimensions: 86 x 86 mm

5
5
5

7 338 00
7 338 01
7 338 05



1G 1W 10Ax Switch (MC)
1G 2W 10Ax Switch (MC)
1G Intermediate Switch (MC)

5

7 338 02



2G 2W 10Ax Switch (MC)

5

7 338 03



3G 2W 10Ax Switch (MC)

Single pole plate switches 10AX - 250V~ with Red Rocker

Conform to BS EN 60669-1: 2000
Flush-mounting back box: min. 16 mm deep
Nominal plate dimensions: 86 x 86 mm

5
5

7 338 00R
7 338 01R



1G 1W 10Ax Switch c/w Red Rocker (MC)
1G 2W 10Ax Switch c/w Red Rocker (MC)

5

7 338 02R



2G 2W 10Ax Switch c/w Red Rocker (MC)

5

7 338 03R



3G 2W 10Ax Switch c/w Red Rocker (MC)

Double pole switches 20 A - 250 V~

Conform to BS EN 60669-1: 2000
Flush-mounting back box: min. 25 mm deep
Nominal plate dimensions: 86 x 86 mm

5

7 338 10



20A 1G DP Switch (MC)

5

7 338 12



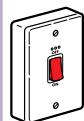
20A 1G DP Switch c/w Red indicator (MC)
with safety mark

Double pole switch 45 A - 250 V~

Conforms to BS EN 60669-1: 2000
Red rocker
Flush-mounting back box: min. 48 mm deep
Nominal plate dimensions: 146 x 86 mm

5

7 338 21



45A 1G DP Switch c/w Red Indicator (MC)

Pack Cat.Nos Data sockets Cat. 6

Rapid cable connection
Flush-mounting back box: min. 35 mm deep
Nominal plate dimensions: 86 x 86 mm

1

7 338 56



1-Gang RJ45 Cat 6 Data Outlet (MC)

Blanking plates

1 gang
Nominal plate dimensions: 86 x 86 mm

5

7 338 95



5

7 338 96



2 gang
Nominal plate dimensions: 86 x 146 mm

Cable outlet 20 A - 250 V~

Conform to BS EN 5733: 1995
Flush-mounting back box: min. 25 mm deep
Nominal plate dimensions: 86 x 86 mm

5

7 338 19



20A 1G DP Switch (MC)

British standard socket outlets, fused connection units - Metalclad



7 338 71



7 338 89

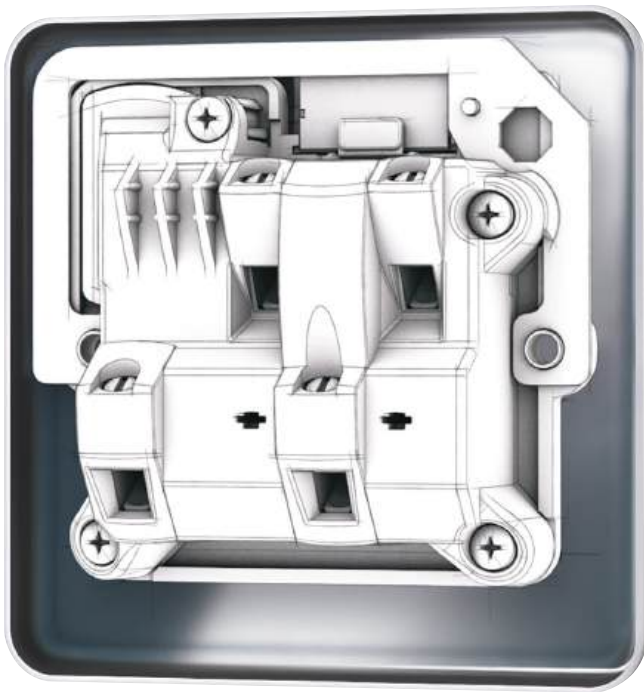
Front plates: grey epoxy coated steel. Terminal screws captive and backed off ready for cabling - large angled terminal entries
Supplied complete with close fit 43 mm deep surface-mounting back box

Pack	Cat.Nos	Double pole socket outlet 13 A - 250 V~
5	7 338 60	Conform to SS 145-2 With safety shutter mechanism Flush-mounting back box: min. 25 mm deep Switched 13A 1G DP SSO (MC)
5	7 338 70	13A 2G DP SSO (MC)
5	7 338 61	Switched with red LED power indicator 13A 1G DP SSO (MC) c/w RED Indicator (MC)
5	7 338 71	13A 2G DP SSO (MC) c/w RED Indicator (MC)
5	7 338 60R	Double pole socket outlets 13A - 250V~ With Red Rocker 13A 1G DP SSO c/w Red Rocker (MC)
5	7 338 70R	Double pole socket outlets 13A - 250V~ With Red Rocker (continued) 13A 2G DP SSO c/w Red Rocker (MC)
5	7 338 89	Socket outlets 15 A - 250 V~ Conform to BS 546: 1950 Patented 3 pin safety shutter mechanism Flush-mounting back box: min. 35 mm deep Nominal plate dimensions: 86 x 86 mm 15A 1G SSO (MC)
5	7 338 89R	Socket outlets 15 A - 250 V~ with Red Rocker 15A 1G SSO c/w Red Rocker (MC)
5	7 338 34	Fused connection units 13 A - 250 V~ Conform to BS 1363 - Part 4: 1995. Fused 13 A (fuse supplied). Fuse drawer retained by quarter turn catch, drawer padlockable in open position for safety. Flush-mounting back box: min. 25 mm deep Nominal plate dimensions: 86 x 86 mm Double pole switched 13A DP Switched Fused Connection Unit (MC)

Pack	Cat.Nos	Fused connection units 13 A - 250 V~ (continued)
5	7 338 35	Double pole switched 13A DP Switched Fused Connection Unit c/w Red Indicator (MC)
5	7 338 36	13A DP Switched Fused Connection Unit c/w Cord Outlet (MC)
5	7 338 37	13A DP Switched Fused Connection Unit c/w Cord Outlet + Red Indicator (MC)
5	7 338 30	Unswitched 13A DP Unswitched Fused Connection Unit (MC)
5	7 338 31	13A DP Unswitched Fused Connection Unit c/w Red Indicator (MC)
5	7 338 32	13A DP Unswitched Fused Connection Unit c/w Cord Outlet (MC)
5	7 338 33	13A DP Unswitched Fused Connection Unit c/w Cord Outlet + Red Indicator (MC)
10	7 364 00	Back Boxes - Surface Mounting 1-Gang Metalclad Back Box, Surface Mount - 43mm (with knockouts)
10	7 364 20	1-Gang Metalclad Back Box, Surface Mount - 43mm (without knockouts)
5	7 364 01	2-Gang Metalclad Back Box, Surface Mount - 43mm (with knockouts)
5	7 364 21	2-Gang Metalclad Back Box, Surface Mount - 43mm (without knockouts)

Renowned for Easy and Safe Installation

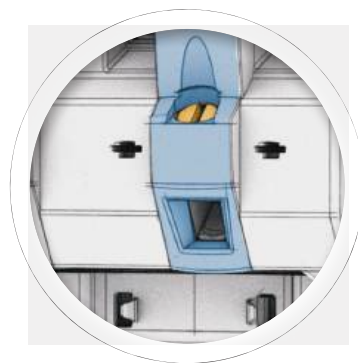
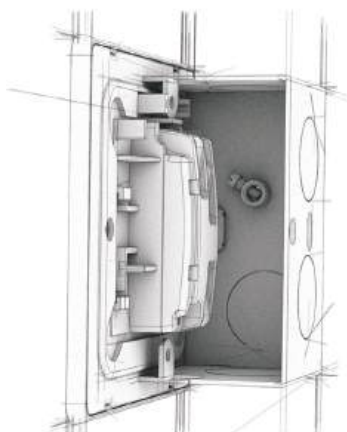
Compact. Simple. Safe.



Synergy™ is more than just an aesthetically pleasing and functionally convenient range. The carefully engineered mechanism also makes this British standard monobloc range a breeze to install and handle. What's more? And the quality that is uniquely Synergy™ means installers can simply fit and forget.

- **Maximum Wiring Space:**
Better wiring.
- **Mechanism are of thermoplastic:**
Flame retardant self extinguish

Large angled terminal entries:
Ample space for termination.



- **Strip length indicated:**
Avoid waste of wires.
- **Captive screws:**
Ensuring you don't lose screws.

YOUR CONTACT IN INDONESIA

PT Legrand Indonesia

Komplek Pergudangan Sentra Industri
Terpadu PIK, Jl. Pantai Indah Selatan Blk. A
No.6, Kamal Muara, Kec. Penjaringan, Jkt
Utara, Daerah Khusus Ibukota Jakarta 14470
Tel: [62] 21 525 06 08
Fax: [62] 21 525 59 35
www.legrand.co.id

YOUR CONTACT IN CAMBODIA

Legrand (S) Pte Ltd Cambodia

Branch & Showroom

#20b Samdach Louis Em (St.282),
BKK1, Phnom Penh
Kingdom of Cambodia
Tel: [855] 0 16 64 77 00
Tel: [855] 0 968 579 354

YOUR CONTACT IN MALAYSIA

Megapower Legrand (M) Sdn Bhd

Lot 1888, Jalan KPB 7,
Kawasan Perindustrian Balakong,
Bukit Belimbing, 43300, Seri Kembangan
Selangor D.E, Malaysia
Tel: [603] 8962 3333
Fax: [603] 8962 3322/ 3388
www.megapower.net.my
www.legrand.com.my

YOUR CONTACT IN MYANMAR

Legrand (S) Pte Ltd Myanmar Branch Showroom

MICT Park, Room No (304), Level 2, Building (15),
Hlaing Township, Yangon Myanmar 11051
Tel: [95] 12 30 52 40
www.legrand.com.mm

YOUR CONTACT IN PHILIPPINES

Bticino Philippines, Inc.

G/F All Seasons Bldg.
112 Aguirre St., Legaspi Village
Makati city, 1229 Philippines
Tel: [63] 2 892 89 72
Fax: [63] 2 892 89 71
www.bticino.com

YOUR CONTACT IN SINGAPORE

Legrand Singapore

Southeast Asia Regional Office
17 Neythal Road, Singapore 628582
Tel: [65] 6416 1550

Email: customerhub.sg@legrand.com.sg
www.legrand.com.sg

YOUR CONTACT IN THAILAND

Bticino (Thailand) Limited





10/F Ploenchit Center, 2 Sukhumvit Road,
Kwaeng Klongtoey, Khet Klongtoey,
Bangkok 10110
Tel: [66] 2 656 9162-7
Fax: [66] 2 656 9197
www.bticino.co.th

YOUR CONTACT IN VIETNAM

Legrand Vietnam

Central Garden Tower, 7th floor
328 Vo Van Kiet Street,
Co Giang Ward, Dist. 1, Ho Chi Minh City
Tel: [848] 39 207 674
Fax: [848] 39 207 675
www.legrand.com.vn

FOLLOW US ALSO ON

-  legrand.com.sg
-  www.fb.com/legrandsingapore
-  youtube.com/user/legrand
-  linkedin.com/company/legrand-s-pte-ltd/

